

EMX3118Y



ENGINEERING CODE
513301916



REFRIGERANT
R-600a



POWER SUPPLY
220-240 V 50 Hz



APPLICATION
L/MBP



MOTOR TYPE
RSCR



STANDARD
ASHRAE



COOLING CAPACITY
414 W



EFFICIENCY
2.16 W/W



DATA

GENERAL DATA

Model	EMX3118Y
Type	Hermetic Reciprocating
Technology	ON/OFF
Compressor Application	L/MBP
Expansion Device	Capillary Tube
Compressor Cooling	Fan/220
HP	1/5
Starting Torque	LST
Plant	BRAZIL

ELECTRICAL DATA

Start Winding Resistance	17.3 Ω at 25°C
Run Winding Resistance	15.16 Ω at 25°C
Locked Rotor Amperage (LRA) 50Hz	7.8 A
Rated Load Amperage (LMBP) at 50 Hz	1 A
Rated Load Amperage (HBP) at 50 Hz	1.2 A

MECHANICAL DATA

Displacement	12.21 cm ³
Oil Charge	150 ml
Oil Type	ALQUILB
Oil Viscosity	ISO5
Weight	7.7 Kg

ELECTRICAL COMPONENTS

Run Capacitor	5.0 µf/350 V
CSR CSIR BOX	No
Starting Device Type	PTC
Starting Device Description	V230
Overload Protection	AE15BU AE19BU

PERFORMANCE

TESTED CONDITIONS

Tested Refrigerant	R-600a
Tested Application	MBP
Tested Standard	ASHRAE
Tested Cooling	Fan
Tested Voltage	220 V
Max Refrigerant Charge	150 g
Refrigerant Temperature	Dew

RATED POINTS

Condensing Temperature °C	Evaporating Temperature °C	Cooling Capacity W	Efficiency W/W	Power Consumption W	Current A	Gas Flow Rate kg/h
54.4	-6.7	414	2.16	192	-	4.93

Test Condition: Subcooling 8.3 K, Return Gas 35 °C. Data are an indication of performance based simulation.

PERFORMANCE CURVE

Condensing Temperature 45°C

Evaporating Temperature °C	Cooling Capacity W	Efficiency W/W	Power Consumption W	Current A	Gas Flow Rate kg/h
-35	110	1.32	83	-	1.20
-30	148	1.54	96	-	1.62
-25	197	1.76	112	-	2.15
-20	256	1.98	129	-	2.81
-15	326	2.21	147	-	3.58
-10	406	2.45	166	-	4.47
-5	496	2.72	183	-	5.48
0	597	3.02	198	-	6.61

Test Condition: Subcooling 8.3 K, Return Gas 35 °C. Data are an indication of performance based simulation.

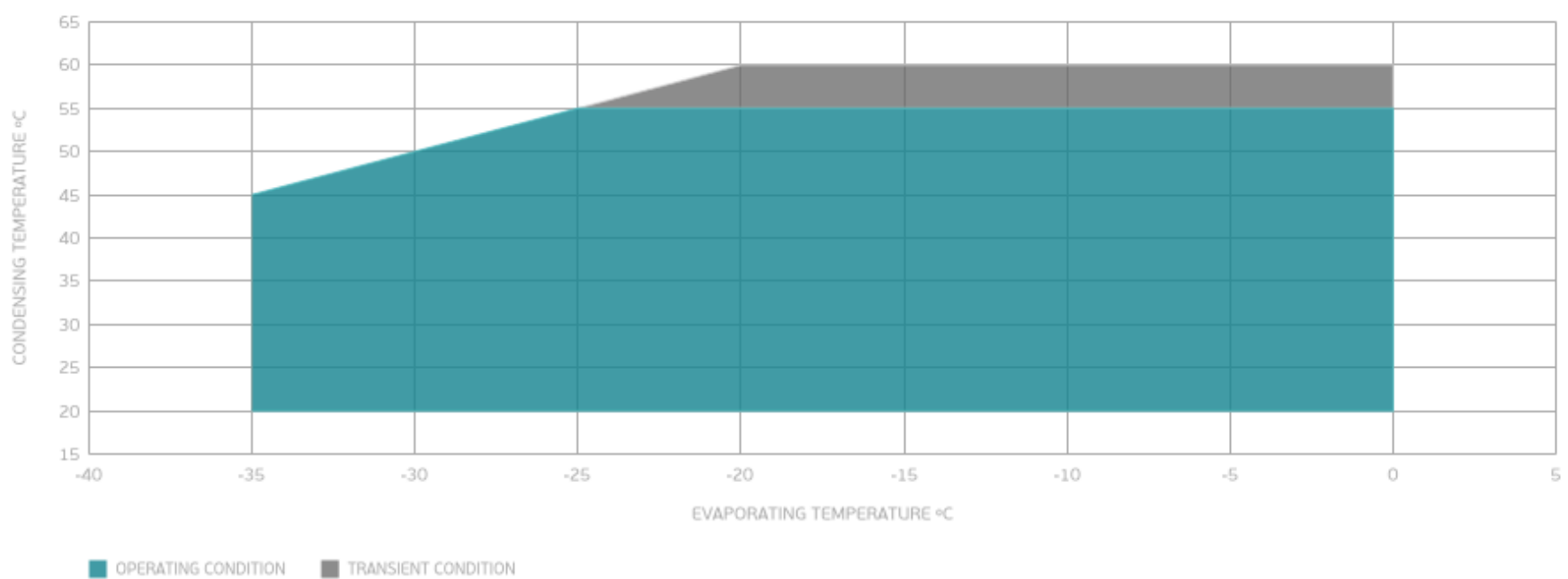
PERFORMANCE CURVE

Condensing Temperature 55°C

Evaporating Temperature °C	Cooling Capacity W	Efficiency W/W	Power Consumption W	Current A	Gas Flow Rate kg/h
-25	171	1.47	116	-	2.03
-20	224	1.65	136	-	2.66
-15	286	1.82	157	-	3.41
-10	358	2.01	178	-	4.28
-5	440	2.20	200	-	5.26
0	531	2.41	220	-	6.37

Test Condition: Subcooling 8.3 K, Return Gas 35 °C. Data are an indication of performance based simulation.

ENVELOPE



External

EXTERNAL CHARACTERISTICS

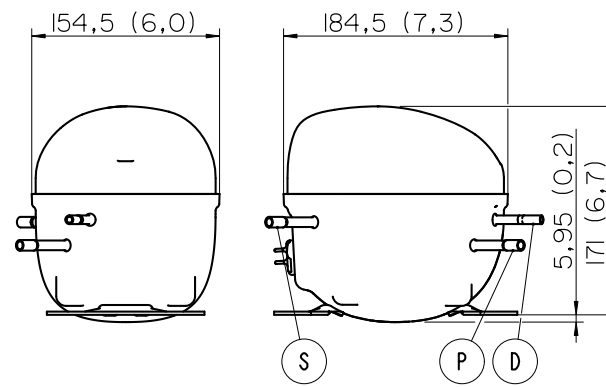
Base Plate	SMALL
Tray Holder	YES

Connector	Internal Diameter	Shape	Material
-----------	-------------------	-------	----------

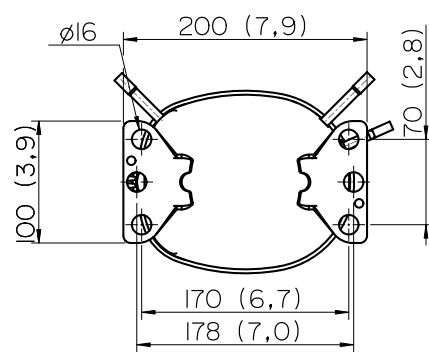
Suction	6.1 mm	SLANTED 42° UP + 45° TO BACK	COPPER
Discharge	4.94 mm	SLANTED 0° UP + 45° TO BACK	COPPER
Process	6.1 mm	SLANTED 45° UP + 45° TO BACK	COPPER

EXTERNAL DIMENSIONS

SHELL



BASE



FENCE

